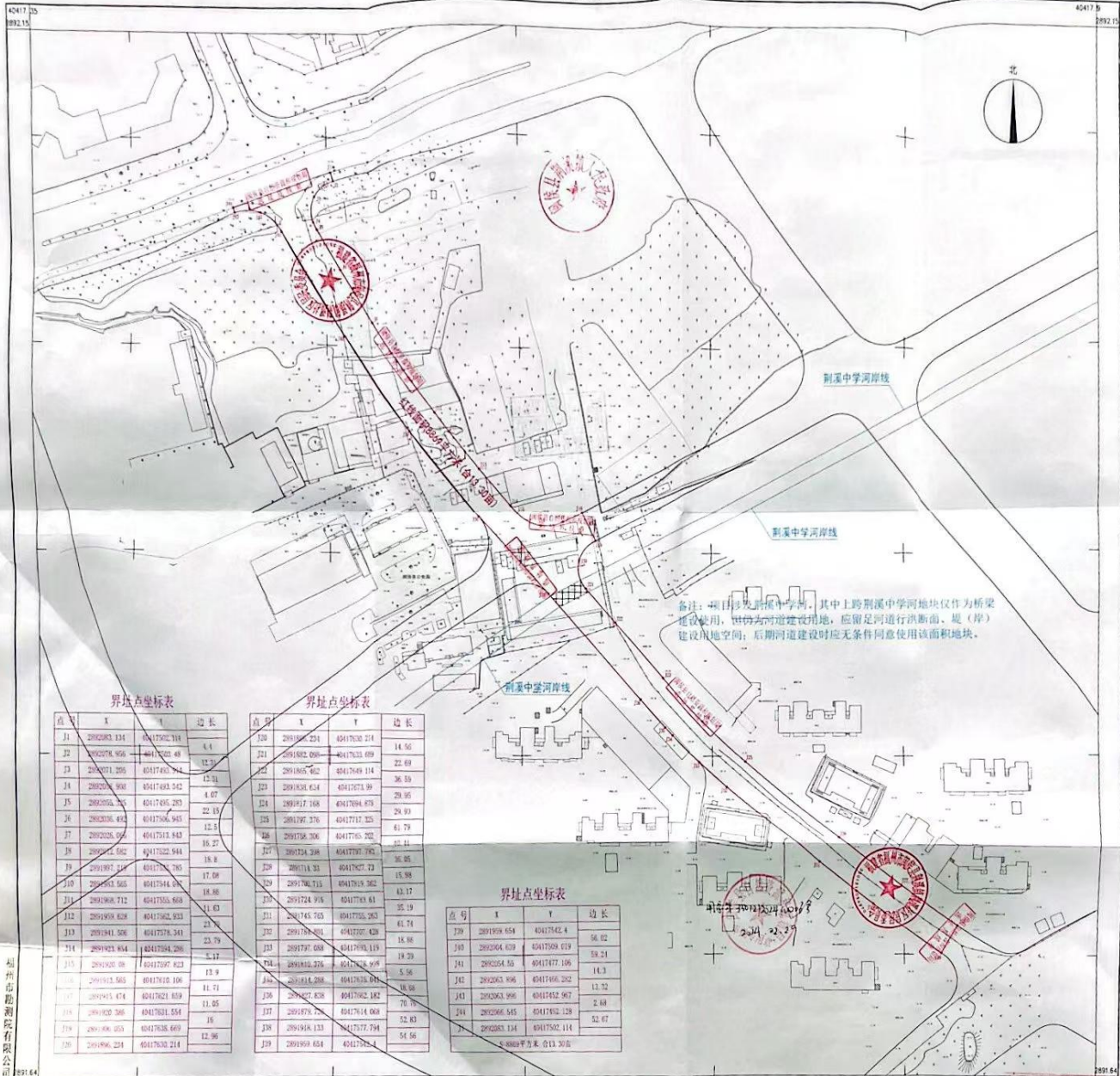


徐家村安置地配套路（经一路）项目红线图
2891.6-40117.3



界址点坐标表

点号	X	Y	边长
J1	2892383.134	40417592.114	4.4
J2	2892378.906	40417592.48	12.39
J3	2892371.305	40417492.542	12.31
J4	2892352.908	40417492.542	4.67
J5	2892352.225	40417492.293	22.15
J6	2892338.432	40417506.945	12.5
J7	2892328.265	40417514.843	15.27
J8	2892317.052	40417522.944	15.8
J9	2892307.115	40417532.783	17.08
J10	2892293.563	40417544.046	18.36
J11	2892280.712	40417555.609	11.63
J12	2892269.838	40417562.933	21.7
J13	2892261.306	40417578.341	23.79
J14	2892253.854	40417584.286	5.17
J15	2892252.08	40417597.823	13.9
J16	2892253.563	40417610.106	11.71
J17	2892245.474	40417621.659	11.85
J18	2892238.286	40417631.554	16
J19	2892230.453	40417638.669	12.96
J20	2892224.214	40417632.214	

界址点坐标表

点号	X	Y	边长
J21	2891862.231	40417632.214	14.56
J22	2891852.696	40417633.699	22.69
J23	2891852.602	40417649.114	36.53
J24	2891838.634	40417671.89	29.95
J25	2891827.168	40417694.873	29.93
J26	2891817.376	40417717.325	61.79
J27	2891798.306	40417745.302	55.41
J28	2891774.338	40417797.195	35.85
J29	2891744.33	40417827.72	15.98
J30	2891740.713	40417819.362	13.17
J31	2891724.916	40417833.61	35.19
J32	2891745.703	40417792.282	61.74
J33	2891768.201	40417807.428	15.88
J34	2891797.688	40417819.119	18.29
J35	2891810.226	40417828.908	5.56
J36	2891814.288	40417835.611	16.36
J37	2891827.838	40417842.182	70.76
J38	2891872.77	40417814.668	62.83
J39	2891918.113	40417772.794	54.58
J40	2891959.654	40417825.4	

界址点坐标表

点号	X	Y	边长
J39	2891959.654	40417825.4	58.62
J40	2892004.619	40417809.619	59.21
J41	2892054.55	40417777.106	14.3
J42	2892063.896	40417496.282	11.32
J43	2892063.996	40417452.967	2.93
J44	2892066.545	40417402.129	52.67
J45	2892063.134	40417502.114	

备注：项目涉及徐家村中学河，其中上跨徐家村中学河地块仅作为桥梁建设使用，不作为河道建设用地，应留足河道行洪断面、堤（岸）建设用地空间；后期河道建设时应无条件同意使用该面积地块。

福州勘测院有限公司

2023年12月全野外数字化采集
CGCS2000坐标系，中央子午线120°
投影高程系，等高距为1米，2017版图式。

1:1000

编制：黄高亮
绘图：林配榕
检查：曾长富